



PM5D Upgrade Guide

This document explains how to update the PM5D firmware to the latest version.

Precautions (Please be sure to read this section first!)

- The user assumes full responsibility for the update.
- You should back up all important data before updating.
- If you fail to follow these instructions properly, or turn off the PM5D or remove the memory card while the update is in progress, the PM5D may be damaged.
- If the PM5D does not work properly after updating, and you've tried updating several times, please contact your Yamaha dealer.
- This documentation is copyrighted by Yamaha Corporation.
- Reproducing or modifying all or part of this documentation without permission is strictly prohibited.

System Requirements

The system requirements below are necessary for updating the firmware.

- One memory card
(A PCMCIA Type II flash ATA card, or a CompactFlash card inserted into a PC card adaptor)
- A device with a PCMCIA Type II card slot
(An environment where downloaded files can be copied to a memory card)

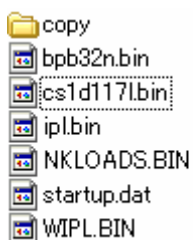
Preparing for the update

- 1.** Prepare a memory card and an environment for reading/writing the card (a laptop computer with a PCMCIA Type II slot, etc).
- 2.** To update the firmware from V1 to V2, move the library data stored on EFFECT LIBRARY program No. 55 to another library number.
EFFECT LIBRARY program No. 55 in the firmware V2 will be assigned read-only De-Esser program, and the library data stored to No. 55 in the firmware V1 will be deleted.
- 3.** Back up the data in the PM5D to a memory card.
You can save the data as "ALL DATA" using the SAVE/LOAD function.
- 4.** If you are using the firmware V1 on which the Add-On Effect package is installed, de-authorize the

license before updating it to V2.

The firmware V2 includes Add-On Effects (COMP276/276S, COMP260/260S, EQ601 and OPEN DECK) as standard components. You can use the de-authorized license for another compatible console. See the Add-On Effects Installation Guide for information on how to de-authorize the license.

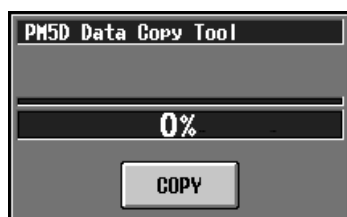
5. Download the latest firmware from the Yamaha Pro Audio website.
<http://www.yamahaproaudio.com/>
6. Insert a memory card formatted in FAT16 to a slot of a device such as a computer.
For more information on formatting the card, see the owner's manual for your computer or card.
7. Extract the downloaded file, then copy all the files and folders under "V***_UpdateCard" folder ("***" indicates a version number) to the memory card.



8. Remove the memory card when the files and folders are copied.
For more information on removing the card see the owner's manual for your computer and card.

Updating the LCD Display Firmware

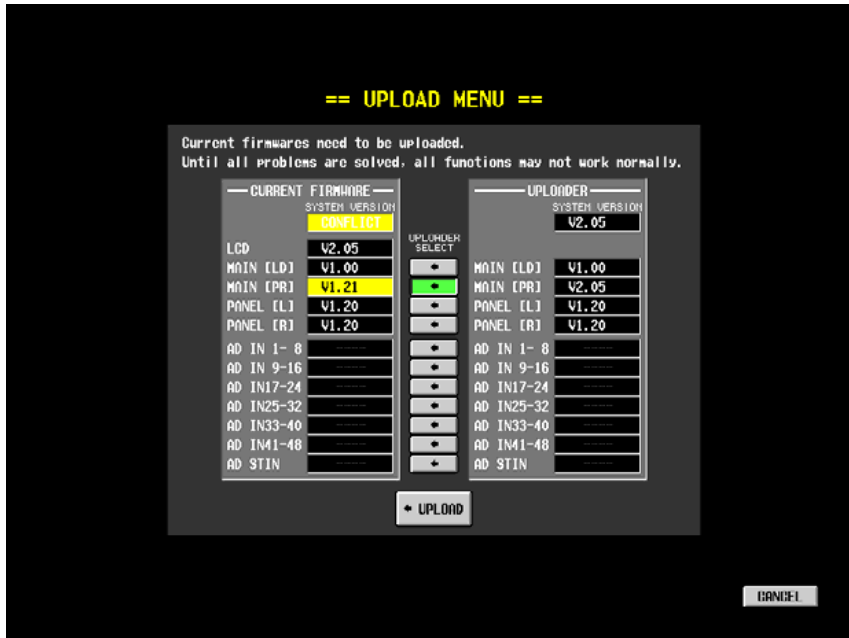
1. Turn off the power to the PM5D.
2. Insert the memory card to the PM5D MEMORY CARD slot, then turn on the power to the PM5D.
A pop-up window for the update appears, instead of the usual opening screen.



3. Click the COPY button to start updating the firmware.
The progress bar will appear indicating the progress of the update.
4. When the progress bar shows "100%" and the "Take Out Card & Re-start" message appears, remove the memory card, then turn the PM5D off and on again.

Updating the Internal CPU Firmware

1. After the update of the LCD display described above (after removing the memory card, then turn the PM5D off and on again), the opening screen appears as usual and the UPLOAD MENU screen appears.



On the left side the current firmware version of each PM5D CPU is shown and on the right side the corresponding firmware version transmitted from the memory card is shown.

If the left and right firmware versions differ from each other, the corresponding UPLOADER SELECT button automatically turns on. Please note that when you try to update the PM5D-RH MAIN or LCD, the UPLOADER SELECT buttons for AD IN/STIN are not turned on since the AD IN/STIN versions are not shown. To update AD IN/STIN, first update MAIN and LCD.

2. Click the UPLOAD in the bottom center of the screen to start updating the corresponding CPU. The progress bar will appear indicating the progress of the update.
3. When the progress bar shows "100%" and the "Please Re-start!" message appears, turn the PM5D off and on again.
The update of each CPU is complete if you do not need to update AD IN/STIN of the PM5D-RH.
4. After turning on the power to the PM5D-RH, follow step 2 and 3 in the UPLOAD MENU screen to update another CPU for which the UPLOADER SELECT buttons are on.

Initializing the Internal Memory

- 1.** After the CPU update described above (after turning the PM5D off and on again), the opening screen appears as usual and the INITIALIZE MENU screen appears.
If the INITIALIZE MENU screen does not appear, turn on the power to the PM5D while holding down the SCENE MEMORY [STORE] key.
- 2.** Click the INITIALIZE ALL MEMORIES button to start initializing the memory.
- 3.** When the initialization is complete, turn the power to the PM5D off and on again (or click the CANCEL button).

Calibrating the Faders

- 1.** When SUB CPU is updated or the faders need to be calibrated, the FADER CALIBRATION screen appears.
The buttons corresponding to the faders that require calibration are turned on (in green) with a check mark.
- 2.** When any of these buttons is shown in green with a check mark click the START CALIBRATION button to execute calibration.
For information on calibration, refer to the Owner's Manual.
- 3.** When the calibration is complete and there is no fader in green with a check mark, click the OK button.
- 4.** Turn off the power to the PM5D when the CALIBRATION MENU screen is shown.

The PM5D update has been completed.

If you have backed up the necessary data, load it back to the device using the SAVE/LOAD function.